

Color

Form

Line

Shape

Space

Texture

Value

10

10

10

10

10

10

10

20

20

20

20

20

20

20

30

30

30

30

30

30

30

40

40

40

40

40

40

40



Lawren Harris
(1926)

Which part of Ontario takes place in this landscape?

10

North Shore Lake Superior (Northern Ontario)



What colour was traditionally produced from charring organic materials such as wood and grape vines or from collecting soot?



BLACK: Lamp Black and Carbon Black





Prudence Heward,
The Emigrants (1928)

How is the colour green being used in this painting?

30

Shadow on the skin, representing a « cool »
temperature





Jean-Paul Lemieux
(1960)

Which part of Canada do you think this scene takes place? 40

Québec (“*La Québécoise*”)

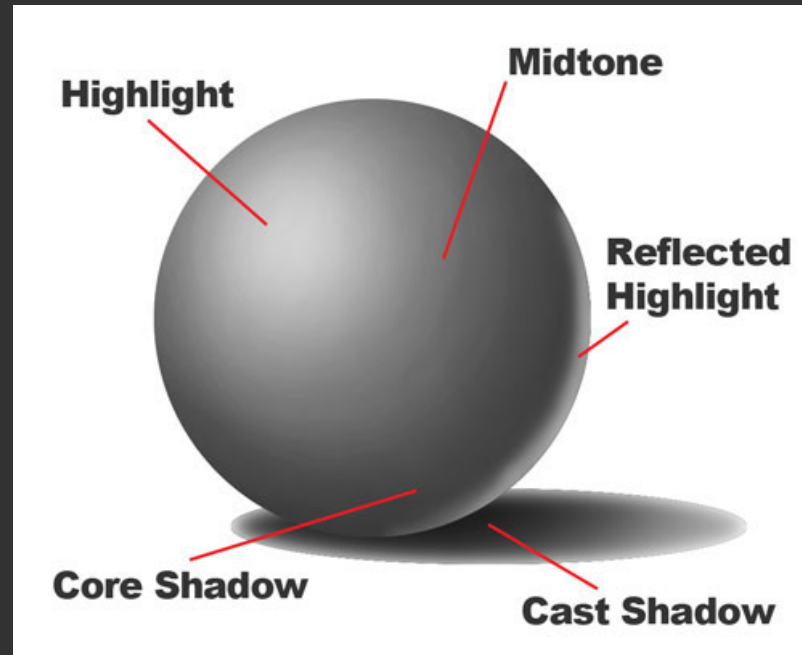


You can turn a _____ into the illusion of _____ by adding _____.



Shape, Form, and Value





An Italian word that means the arrangement of light and shadow.

Chiaroscuro



A graphic system that creates the illusion of depth and volume on a two-dimensional surface



Perspective



When one object covers part of a second object, the first seems to be closer to the viewer. This is referred to as what?



Overlapping





Vincent van Gogh
A Wheatfield with Cypresses (1889)

What effect do the lines in this composition create? 10

Movement, Energy, Wind (the forces of Nature)



Alex Colville
Soldier and Girl At Station (1953)

Where are the lines guiding us in the picture?

To the Line of Horizon





Robert Bateman
Grizzly Bear Etching

What effect do the lines in this artwork?

Texture





Are the lines used to guide the viewer to particular parts of the picture?

Utagawa Hiroshige
Sudden Shower Over Shin-Ohashi Bridge and Atake (1857)

No, the thin dark parallel lines (in two directions) are depicting the effect of rain (Sudden showers)

We typically think of shape as _____?



Closed Contour

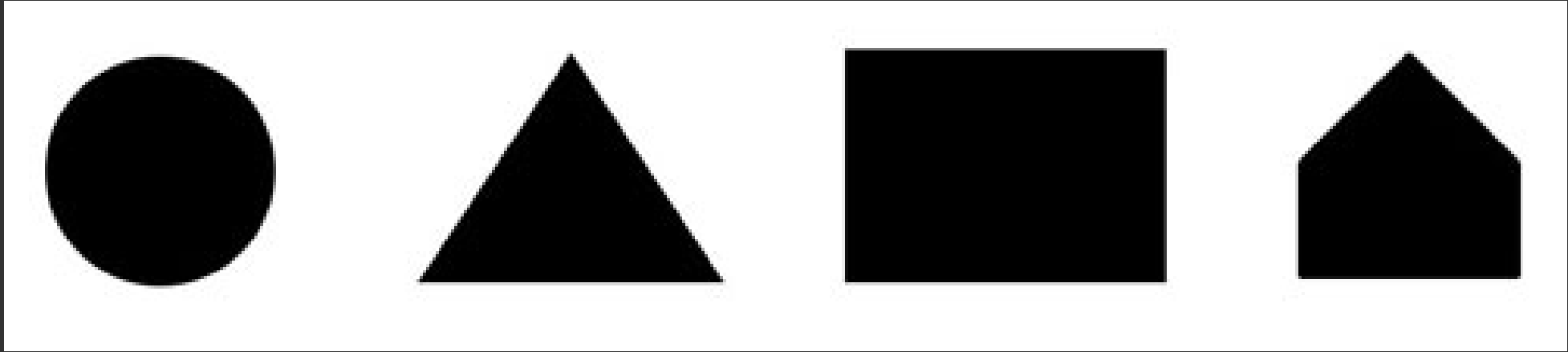


All shapes are _____ meaning they have
only _____ and _____.



Dimensional, Length, and Width





These shapes fall into what category?

30

Geometric/Regular Shapes

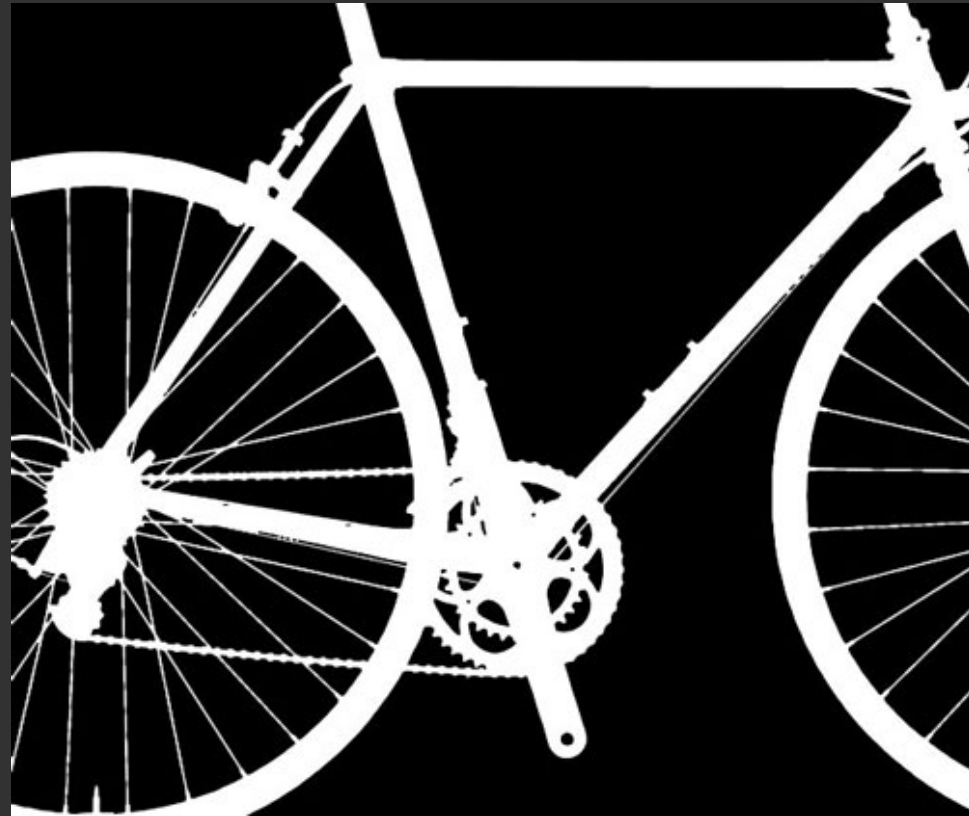




These shapes seem to follow no rules, what are they called?

Organic/Freeform





In an artwork, what do the shapes or forms of interest represent?

Positive Space

r



What is the term for space that can be over, under, through, behind, and around a form?



3D Space



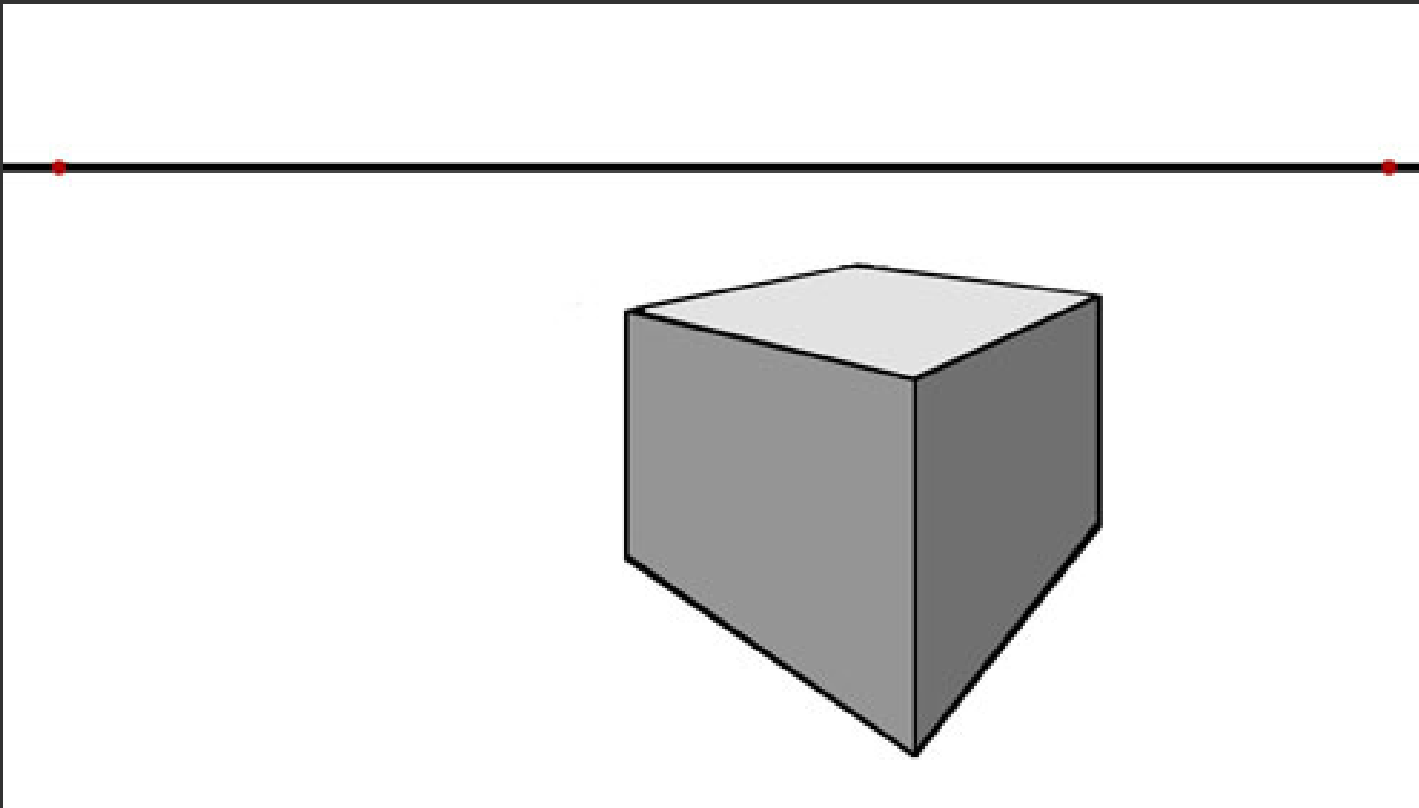
What is the empty space between shapes or forms called?



Negative Space

r





◀ The angle at which you view an object is referred to as what? ▶

The Point of View



A painting technique in which the paint is built up on the surface to create a texture



Impasto



A surface that reflects a soft, dull light is known as what?



Matte



What other element of art reveals the illusion of texture?



Value

r





In the detail from a traditional Dutch still life above you can see remarkable *verisimilitude* (the appearance of being real) in the painted insects and drops of moisture on the silky surface of the flower petals. This is an example of what kind of texture?

Jan Van Huysum
Bouquet of Flowers in an Urn, 1724



Optical Texture

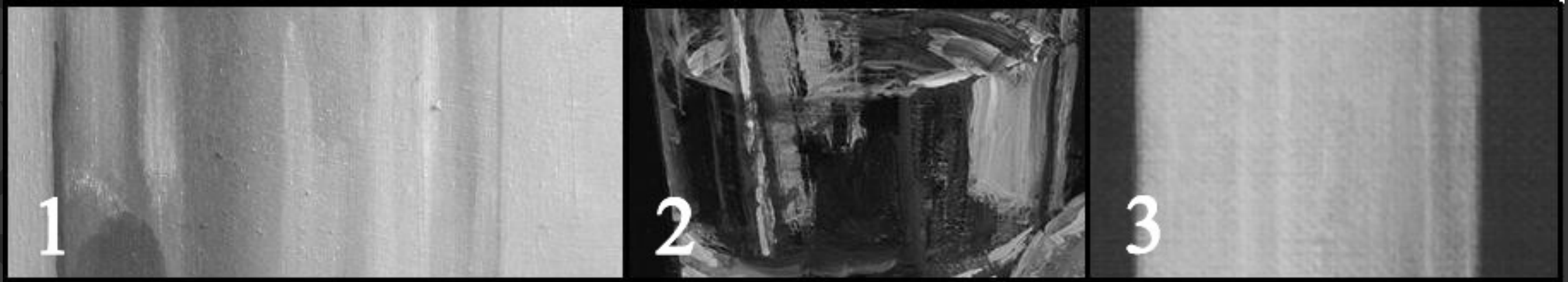




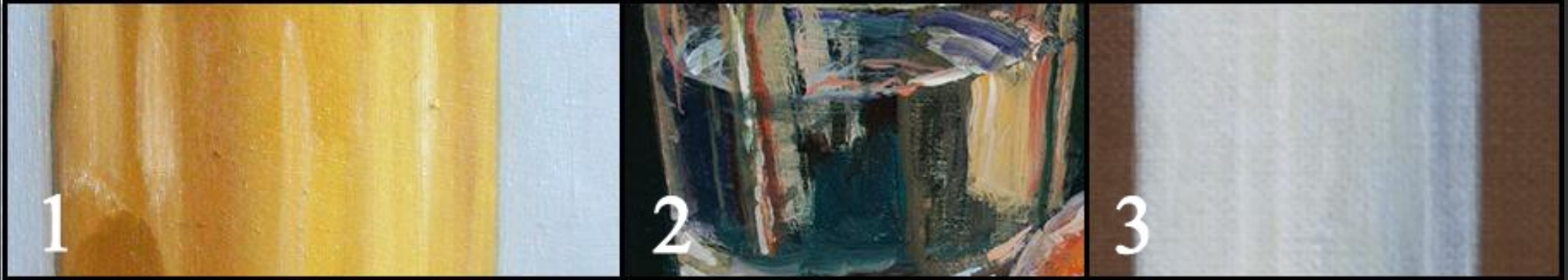
Joseph Mallord William
Turner,
*Snow Storm: Steam-Boat
off a Harbour's Mouth*
(1842)

What is the artist emphasizing in this image through the use of light and darkness?

Sea-motion, mist and light. There is a story that Turner asked to be tied to the mast of a steam-ship during a nocturnal storm at sea, to experience the feeling of it, and was there for four hours.



Which glass contains milk, juice, or water?



1

1. Juice

2

2. Water

3

3. Milk





Alex Colville
Family and Rainstorm (1955)

What kind of sky has the artist created by the use of value?

Stormy Clouds by creating different shades in the sky
(contrast)





Joseph Mallord William Turner
*Snow Storm, Hannibal and his
Army Crossing the Alps* (1812)

What is the artist trying to demonstrate in this painting?

The painting depicts the struggle of Hannibal's soldiers to cross the Maritime Alps in 218BC, opposed by the forces of nature and local tribes. A curving black storm cloud dominates the sky, a white avalanche, a swirling oval vortex of wind, rain and cloud, a dynamic composition of contrasting light and dark that will recur in later works.